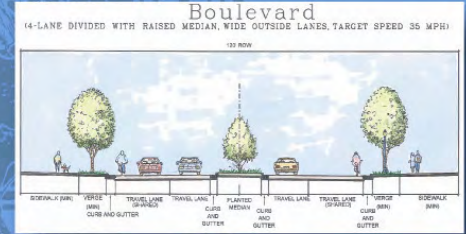
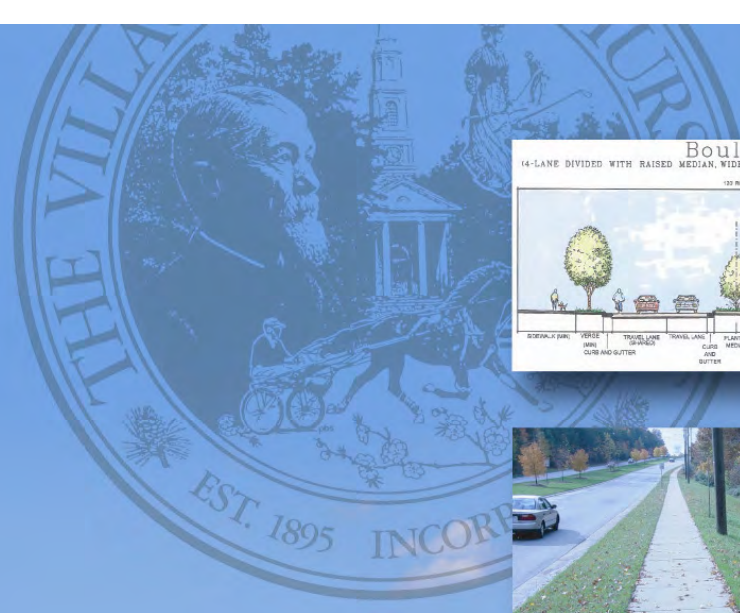


Presentation

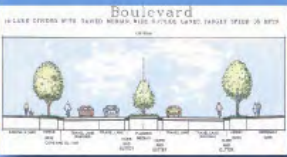


Linking Pinehurst: Preserving our History while Planning for our Future

*Council Presentation
January 8, 2008*

*Western Connector Corridor Study
Pinehurst, NC*



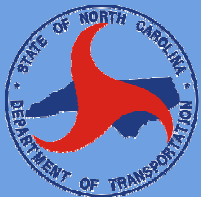


Linking Pinehurst:
Preserving our History while Planning for our Future



Agenda

- **Planning Effort**
- **Advisory Committee**
- **Alternatives**
- **Design Challenges/Analysis**
- **Functional Alignment**
- **Where Do We Go From Here?**



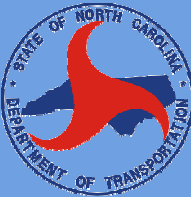
Kimley-Horn
and Associates, Inc.



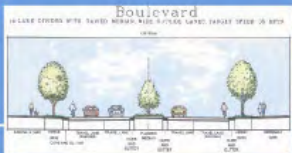
Linking Pinchurst:
Preserving our History while Planning for our Future



Is there a Problem?



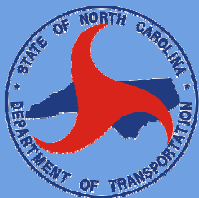
Kimley-Horn
and Associates, Inc.

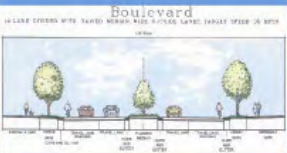


Linking Pinchurst:
Preserving our History while Planning for our Future



Is there a Problem?

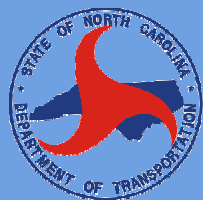




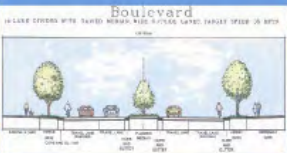
Linking Pinehurst:
Preserving our History while Planning for our Future



Is there a Problem?



Kimley-Horn
and Associates, Inc.

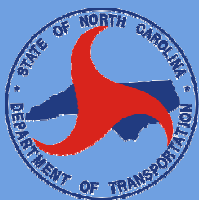


Linking Pinehurst:
Preserving our History while Planning for our Future



Advisory Committee

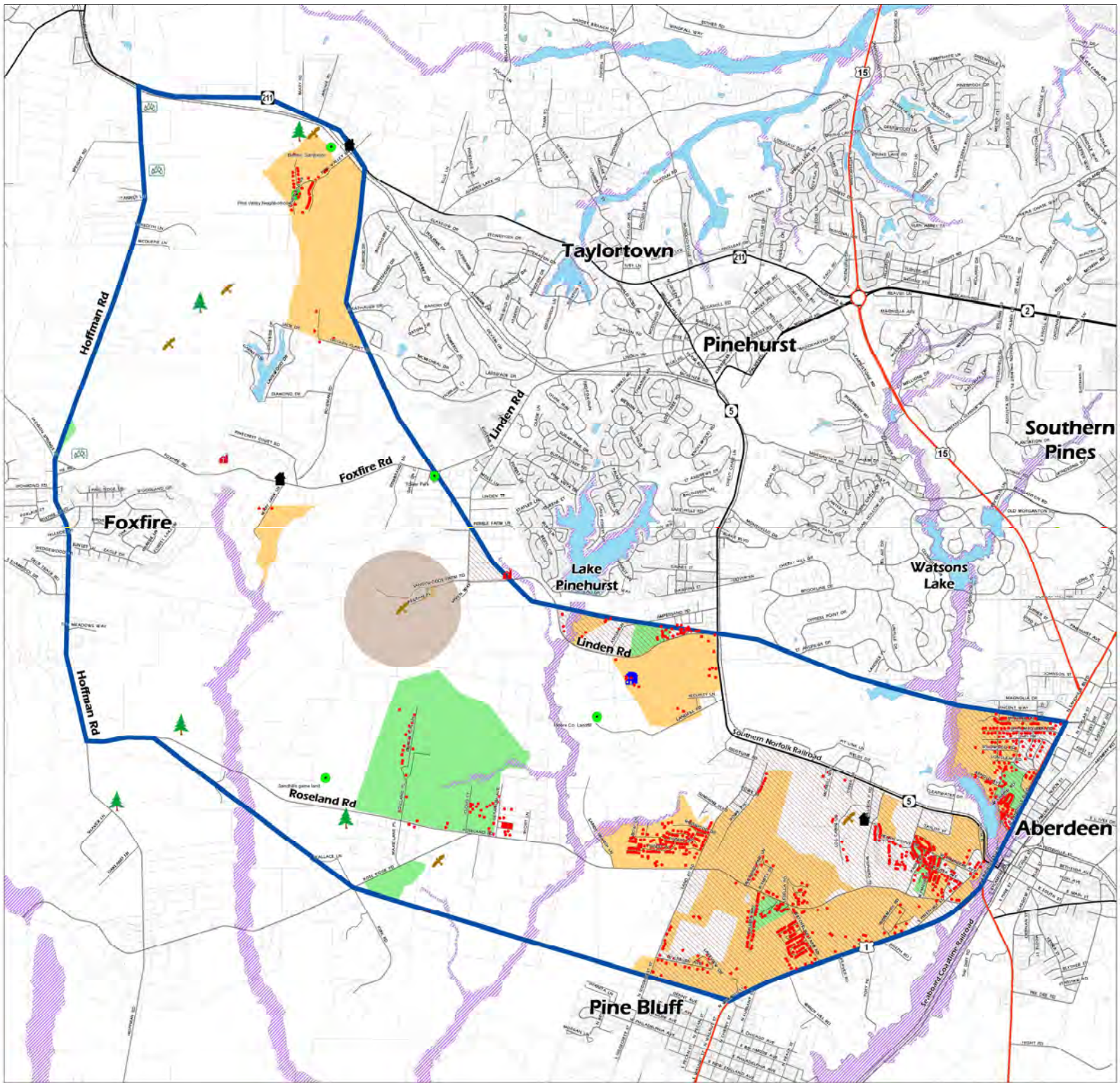
- Pinehurst, Aberdeen, and Foxfire
- Issues and Ideas
- Developed Alternative Corridors



Kimley-Horn
and Associates, Inc.

Village of Pinehurst Western Connector Corridor Study

Environmental and Cultural Constraints



- Potential Red-Cockaded Woodpecker Habitat
- Longleaf Pine
- Planted Pine
- Lloyd-Howe House
- Potential Historic House
- Church
- Other (Labeled)
- Rooftops
- Study Area
- 1/2 Mile Buffer of RCW
- 8 to 13% Below Poverty*
- Greater than 10% Hispanic**
- Greater than 10% Minority**
- Parcels
- Floodplains
- Wetlands
- Bodies of Water
- Streams/Rivers
- US Highways
- State Highways
- Local Streets
- Railroad

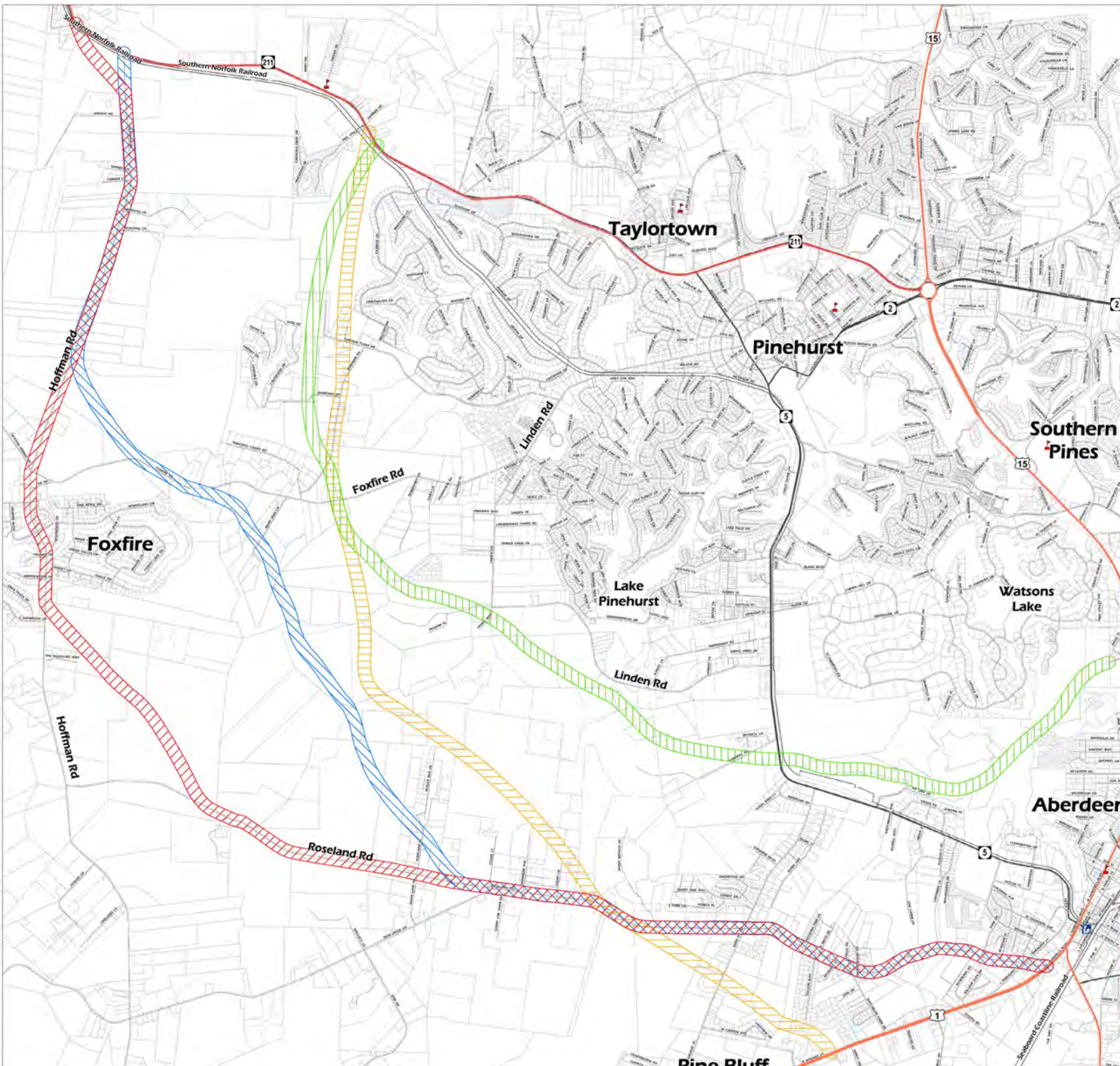
* Census Block Group Level
 ** Census Block Level
 Source: CGIA, USGS Mapping, Village of Pinehurst, NCEM, and NCTD

0 1 Miles

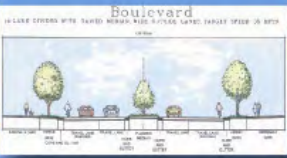
November 2006

Village of Pinehurst Western Connector Corridor Study

Alternative Analysis



- Alternative A
- Alternative B
- Alternative C
- Alternative D
- State TIP Projects
- US Highways
- State Highways
- Local Streets
- Railroad
- Parcels



Design Challenges

- **Utilize Existing Roadways**

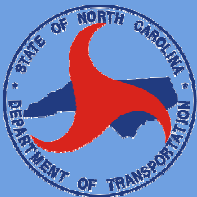
- 2.6 Miles Existing Roadway (11 Total Miles)

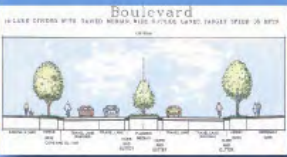
- **Design Speed**

- 50 mph (West of NC 5), 40 mph (East of NC 5)
- East of NC 5 – alignment winds between neighborhoods, schools, and utilities

- **Impacts**

- No Structural Takes, Only Property Takes
- Alignment Near Athletic Field at Southern Middle School (No Impacts to Developed School Property)





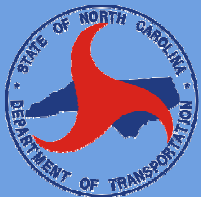
Design Challenges

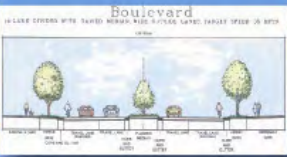
• New Structures

- Grade Separation Over NC 5 and RR
- Box Culvert at Sandy Run Creek
- Box Culvert at Horse Creek

• Railroad Crossings

- Existing Crossing at NC 5 Near Pit GC (can be closed)
- New Crossing at NC 211 (proposed at-grade)
- Existing Crossing at NC 5 Near Industrial (potential closure)



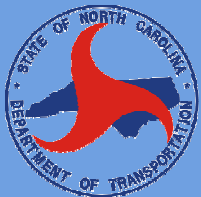


Linking Pinehurst:
Preserving our History while Planning for our Future



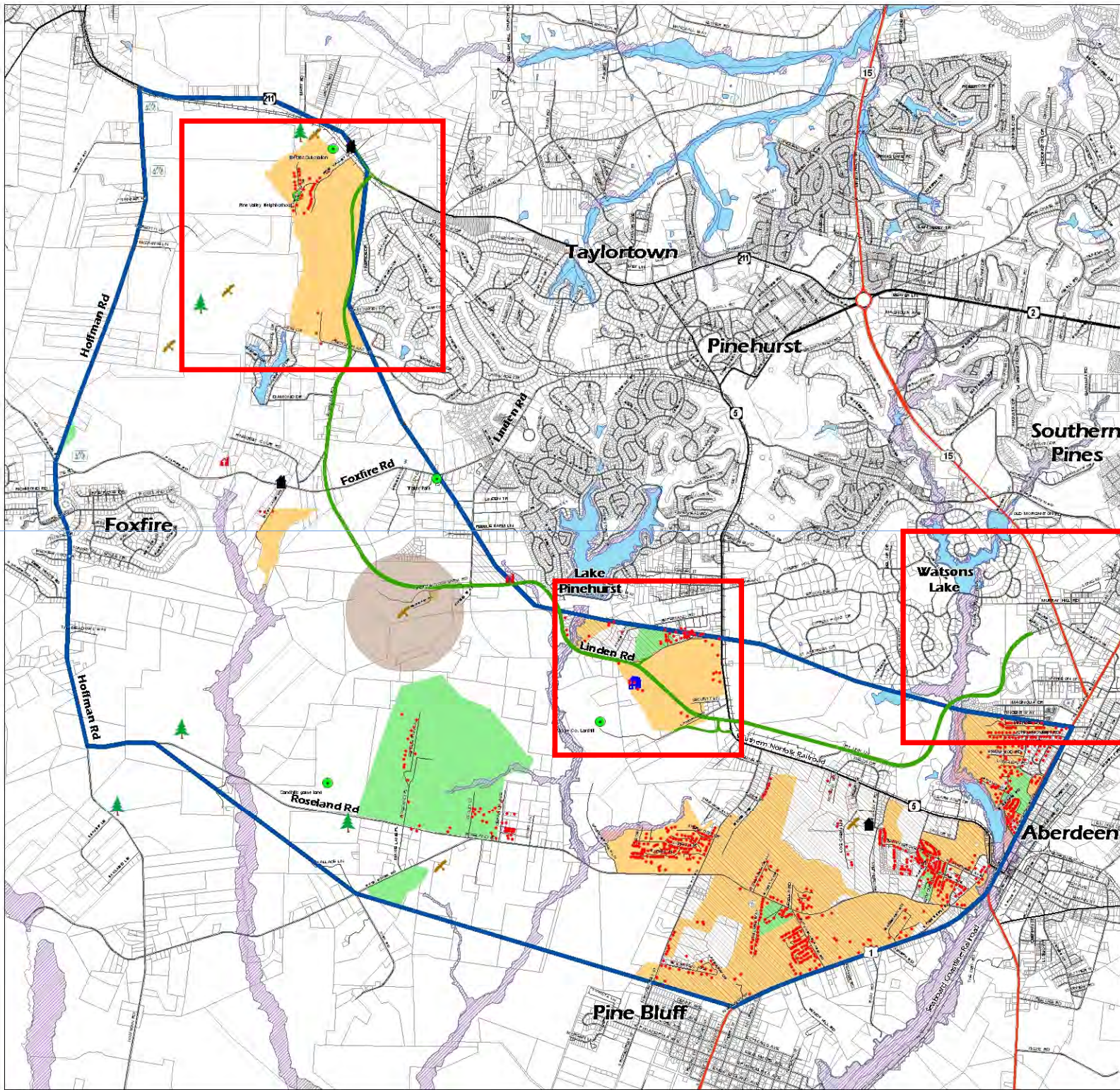
Design Challenges

- **Environmental Impacts**
 - Wetlands
 - Red Cockaded Woodpecker
 - Landfill
 - Historic Properties



Kimley-Horn
and Associates, Inc.

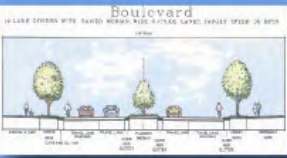
Village of Pinehurst Western Connector Corridor Study Environmental and Cultural Constraints



- Proposed Alignment
- Potential Red-Cockaded Woodpecker Habitat
- Longleaf Pine
- Planted Pine
- Lloyd-Howe House
- Potential Historic House
- Church
- Other (Labeled)
- Rooftops
- Study Area
- 1/2 Mile Buffer of RCW
- 8 to 13% Below Poverty*
- Greater than 10% Hispanic**
- Greater than 10% Minority**
- Parcels
- Floodplains
- Wetlands
- Bodies of Water
- Streams/Rivers
- US Highways
- State Highways
- Local Streets
- Railroad

* Census Block Group Level
 ** Census Block Level
 Source: CGA, USGS Mapping, Village of Pinehurst, NCDWM, and NCDOT

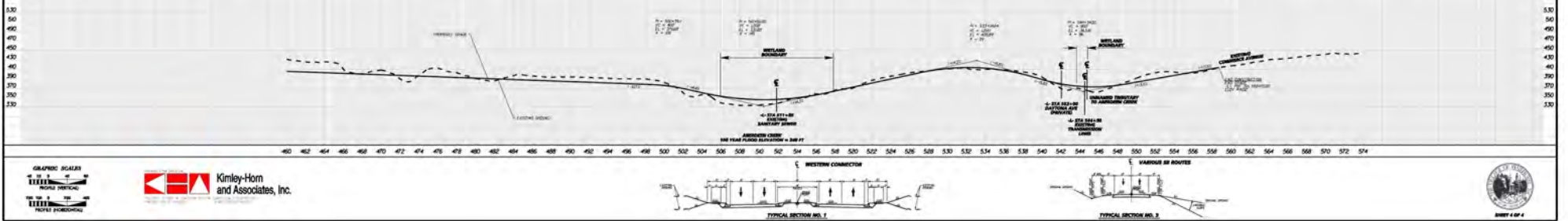
January 2007



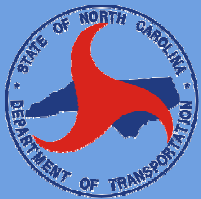
Linking Pinchurst:
Preserving our History while Planning for our Future



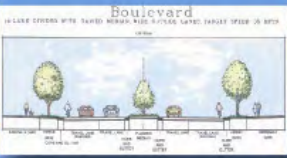
Functional Design Plans



Kimley-Horn
and Associates, Inc.



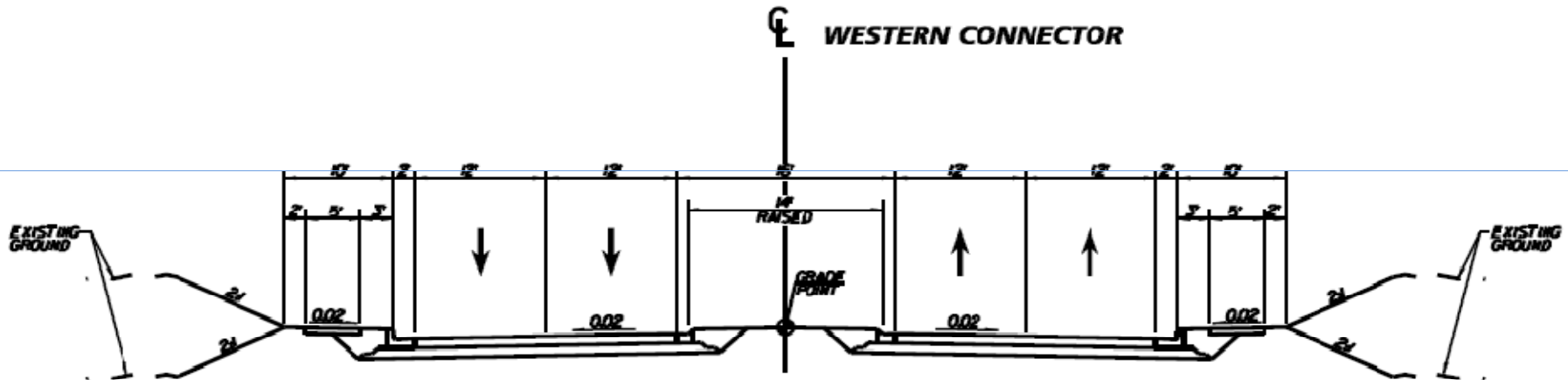
Kimley-Horn
and Associates, Inc.



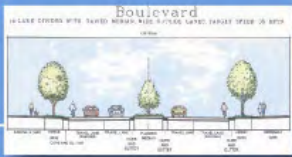
Linking Pinchurst:
Preserving our History while Planning for our Future



Typical Cross Section:



TYPICAL SECTION #1



Protecting the Right-of-Way:

Adopt the Plan!

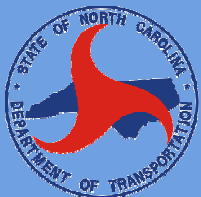
- Part of the **Development Review Process**
- Reservation/Dedication occurs thru site plan approval
- Require developer to build 2-Ln on 4-Ln ROW

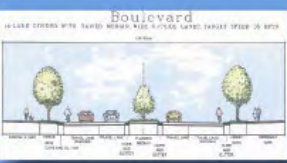
Comprehensive Plan

- **Future Land Use Map** – show alignment
- Rezoning has to be consistent with adopted plans

Corridor Protection Overlay District Ordinance

- Buffer tied to centerline alignment
- All rules apply to “X” feet from centerline

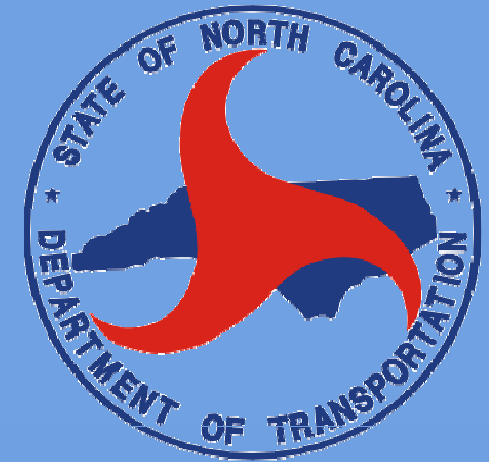


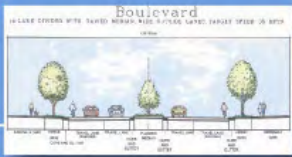


Protecting the Right-of-Way:

NC Corridor Map Act

- Locally initiated
- NCDOT requires NEPA
 - 3 year clock starts when developer submits a site plan and it is denied
 - Within 3 years, ROW must be purchased or you let developer proceed
 - Village could pay for ROW needs, or
 - Developer reserves ROW
- Map Acts: 8 complete/ 12 active (to date)



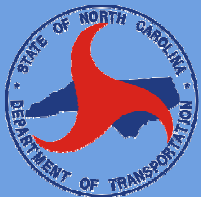


Linking Pinehurst:
Preserving our History while Planning for our Future



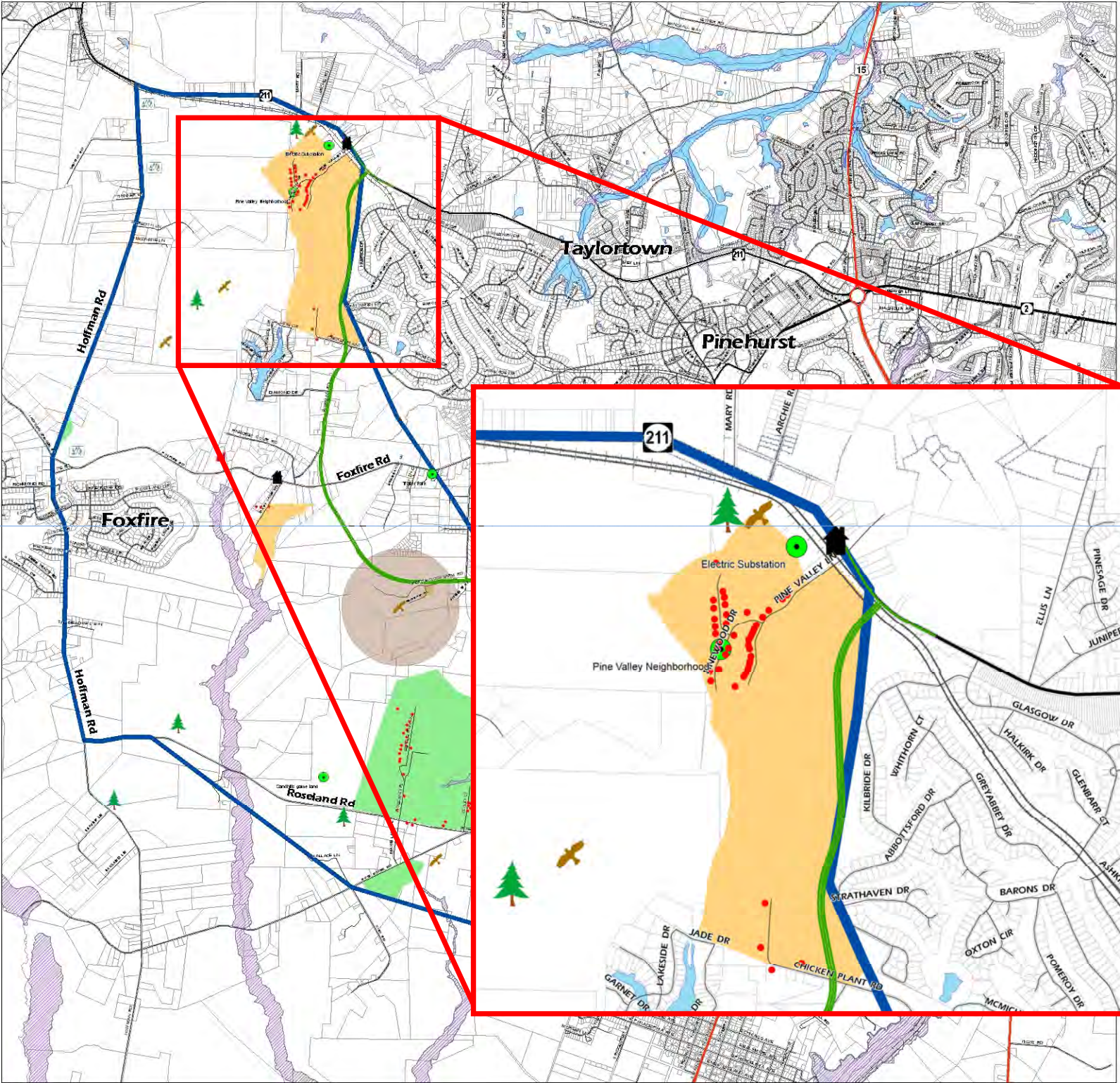
What's Next:

- **Public Workshop**
- **Meeting with BOT**
- **Report**
- **Adoption**



Kimley-Horn
and Associates, Inc.

Village of Pinehurst Western Connector Corridor Study Environmental and Cultural Constraints



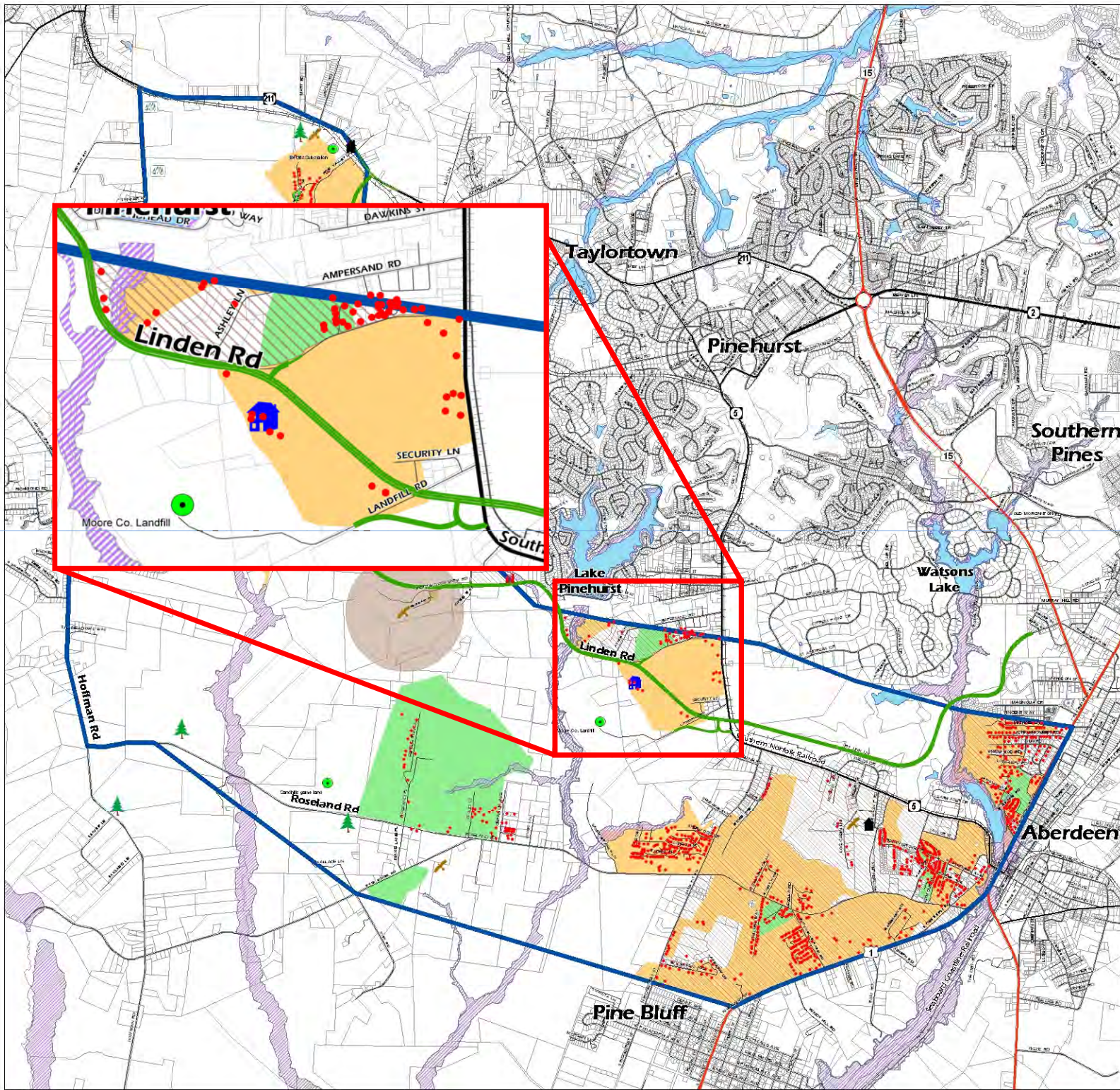
- Proposed Alignment
- Potential Red-Cockaded Woodpecker Habitat
- Longleaf Pine
- Planted Pine
- Lloyd-Howe House
- Potential Historic House
- Church
- Other (Labeled)
- Rooftops
- Study Area
- 1/2 Mile Buffer of RCW
- 8 to 13% Below Poverty*
- Greater than 10% Hispanic**
- Greater than 10% Minority**
- Parcels
- Floodplains
- Wetlands
- Bodies of Water
- Streams/Rivers
- US Highways
- State Highways
- Local Streets
- Railroad

* Census Block Group Level
 ** Census Block Level
 Source: CGA, USGS Mapping, Village of Pinehurst, NCDWQ, and NCDOT

0 1 Miles

January 2007

Village of Pinehurst Western Connector Corridor Study Environmental and Cultural Constraints





- Proposed Alignment
- Potential Red-Cockaded Woodpecker Habitat
- Longleaf Pine
- Planted Pine
- Lloyd-Howe House
- Potential Historic House
- Church
- Other (Labeled)
- Rooftops
- Study Area
- 1/2 Mile Buffer of RCW
- 8 to 13% Below Poverty*
- Greater than 10% Hispanic**
- Greater than 10% Minority**
- Parcels
- Floodplains
- Wetlands
- Bodies of Water
- Streams/Rivers
- US Highways
- State Highways
- Local Streets
- Railroad

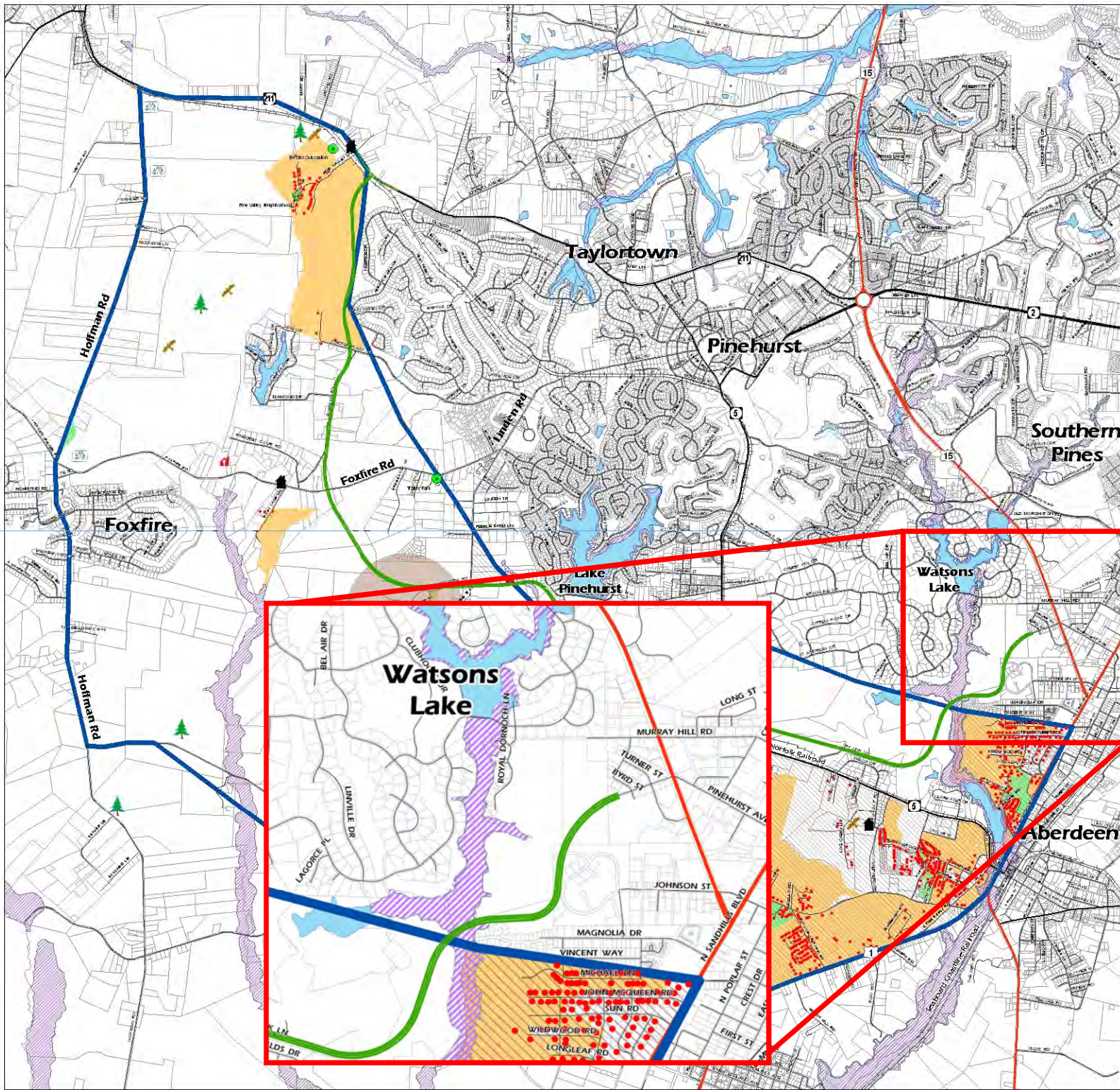
* Census Block Group Level
 ** Census Block Level
 Source: CGA, USGS Mapping, Village of Pinehurst, NCDWQ, and NCDOT

0 1 Miles

January 2007

Village of Pinehurst Western Connector Corridor Study Environmental and Cultural Constraints



- Proposed Alignment
- ✂ Potential Red-Cockaded Woodpecker Habitat
- 🌲 Longleaf Pine
- 🌲 Planted Pine
- 🏠 Lloyd-Howe House
- 🏠 Potential Historic House
- ⛪ Church
- Other (Labeled)
- Rooftops
- Study Area
- 1/2 Mile Buffer of RCW
- 8 to 13% Below Poverty*
- Greater than 10% Hispanic**
- Greater than 10% Minority**
- Parcels
- Floodplains
- Wetlands
- Bodies of Water
- Streams/Rivers
- US Highways
- State Highways
- Local Streets
- +—+—+—+—+—+—+—+—+— Railroad

* Census Block Group Level
 ** Census Block Level
 Source: CGA, USGS Mapping, Village of Pinehurst, NCDWQ, and NCDOT

0 1 Miles

January 2007