

Police Department FY-22 Report to Council July 2022

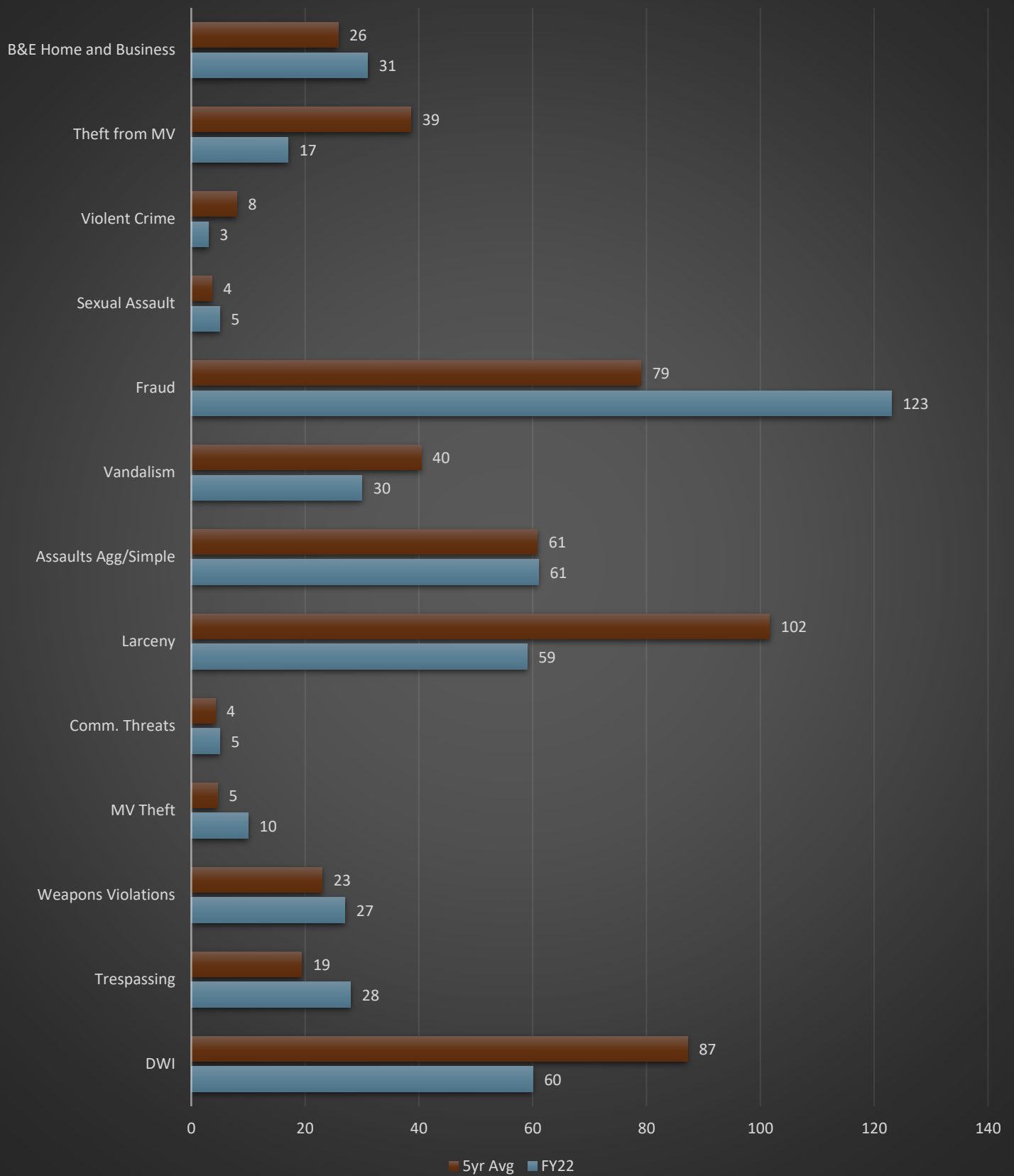


Prepared by
Chief Glen Webb

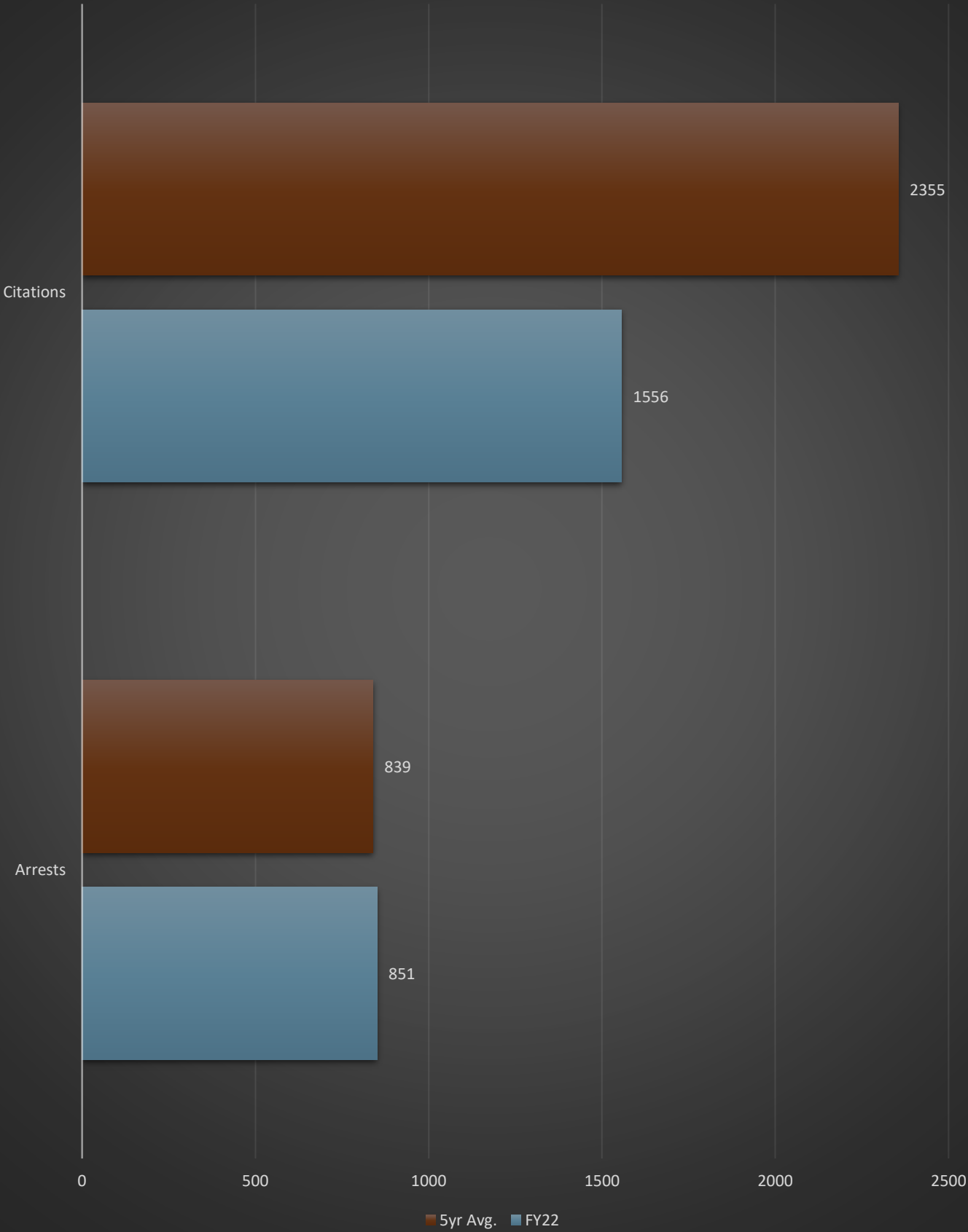
7.18.2022

Pinehurst Police FY22 Report (With Previous 5 Year Avg.)

Quality of Life Crime FY22



Citations/Arrests FY22



Summary

Through the fiscal year as compared to the 5 year rolling average, crime is generally flat. Larceny had the largest decline while frauds had the largest increase, almost completely due to national and international credit card scams that occurred last year. Those were referred to federal authorities for investigation as they were occurring in a coordinated non-local fashion. Below I have inserted some charts that may be of interest, all timeframes shown are for fiscal year 2022. Chart 1 is the number of incidents compared with time of day. Chart 2 is the case status report which shows a large majority of cases are closed by arrest. Chart 3 shows the incidents per month in which September 2021 is our outlier month for FY22. When I drilled down in those stats, September accounted for just over half the breaking and entering cases we investigated. This illustrates that we are not subject to daily events of crime, but have a very safe community with an occasional rash of incidents. As chart 2 shows however, those incidents are quickly solved and most of the time by arrest.

Definitions

RMS: Records Management System. Stores all reports and is the source for the analytic data in the tables.

IBR: Incident Based Reporting. The method for reporting incidents of crime established through the federal government. This information is fed to NIBRS, National Incident Based Reporting System. This is an attempt to standardize crime reporting across the nation. It is a switch from the previous method of UCR (Uniform Crime Reporting).

CAD: Computer Aided Dispatch, is how officer dispatches are recorded. Each call is retained with some detail. Though not every call has an incident report, every call our officers respond to is recorded in the CAD.

Chart 1

Incidents by Date/Time

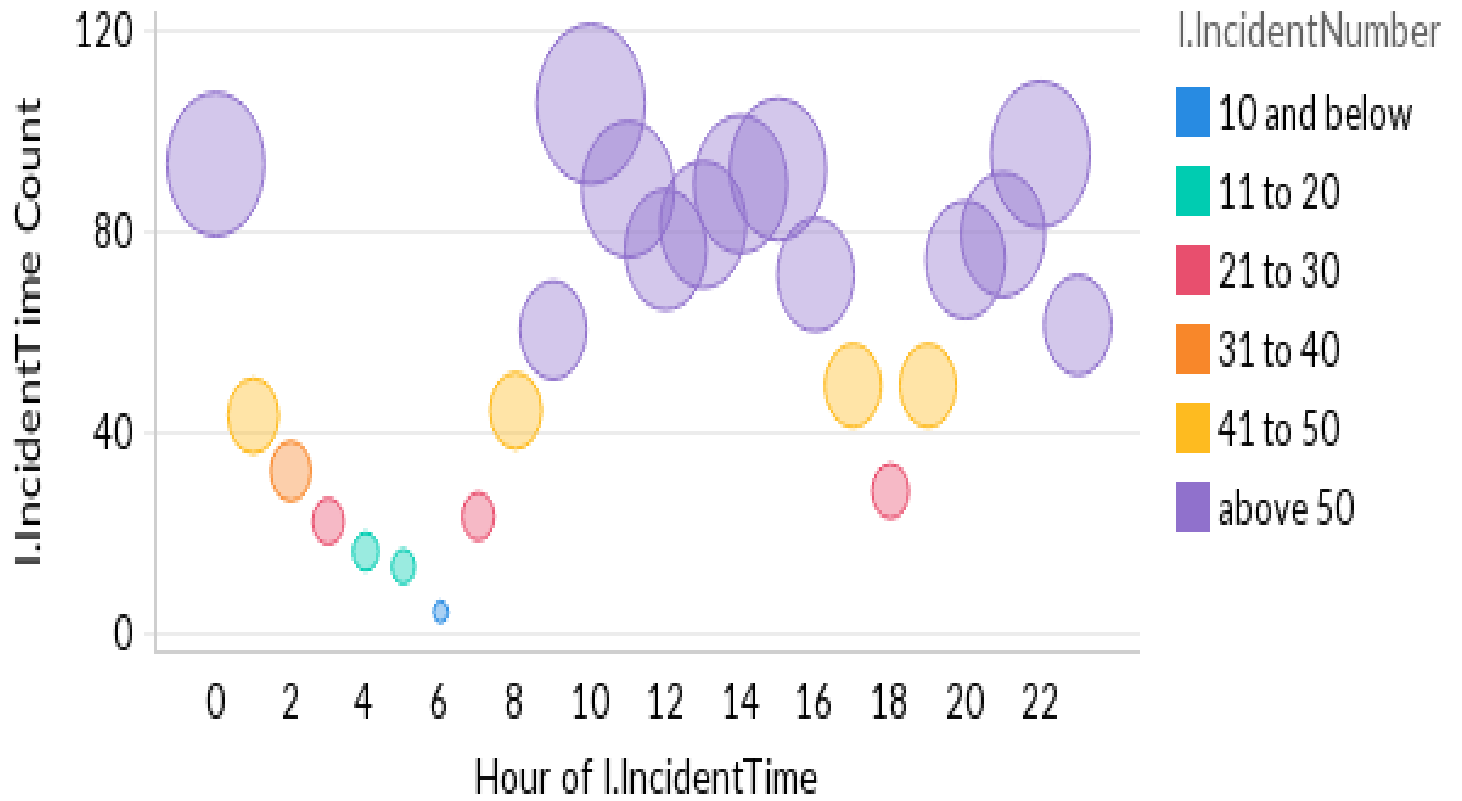
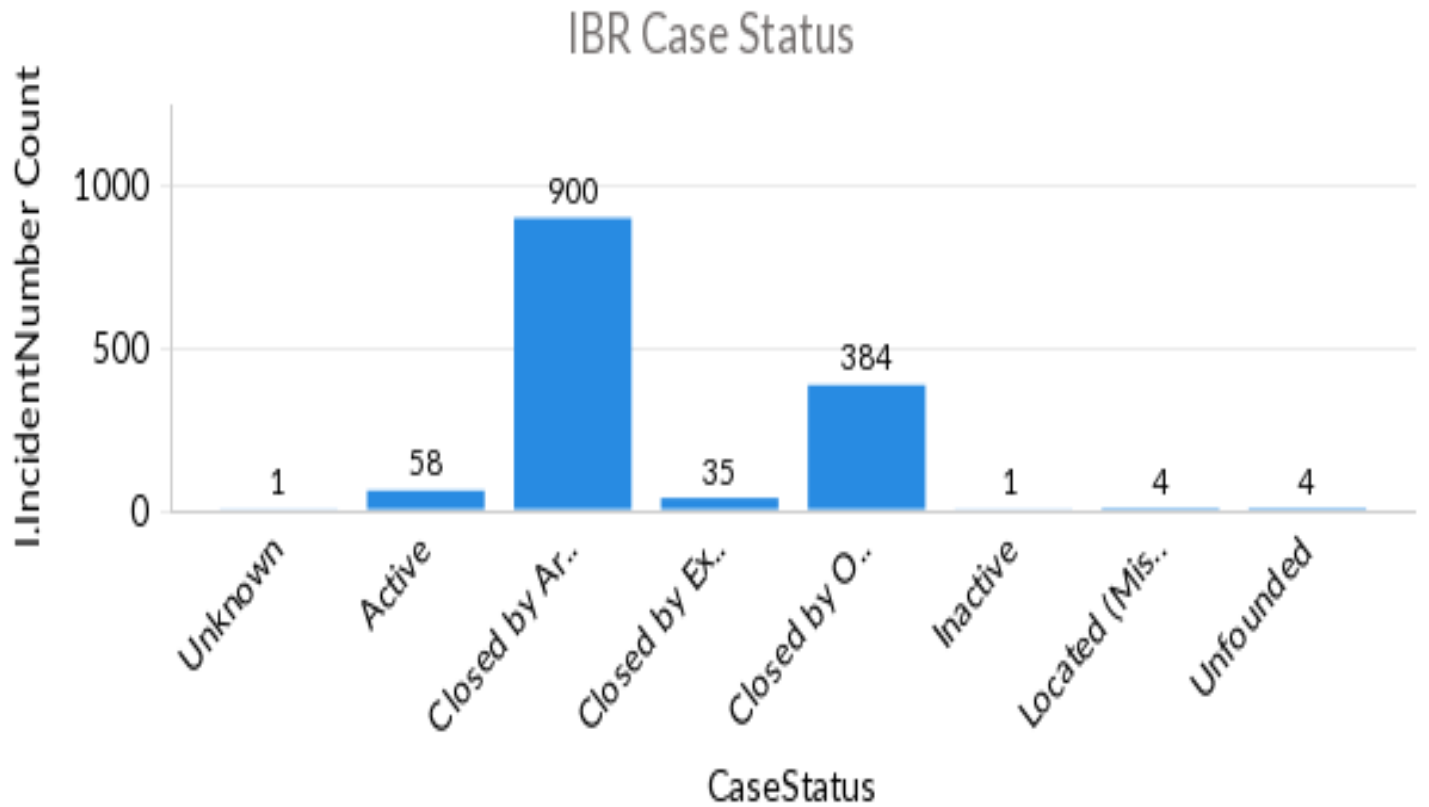
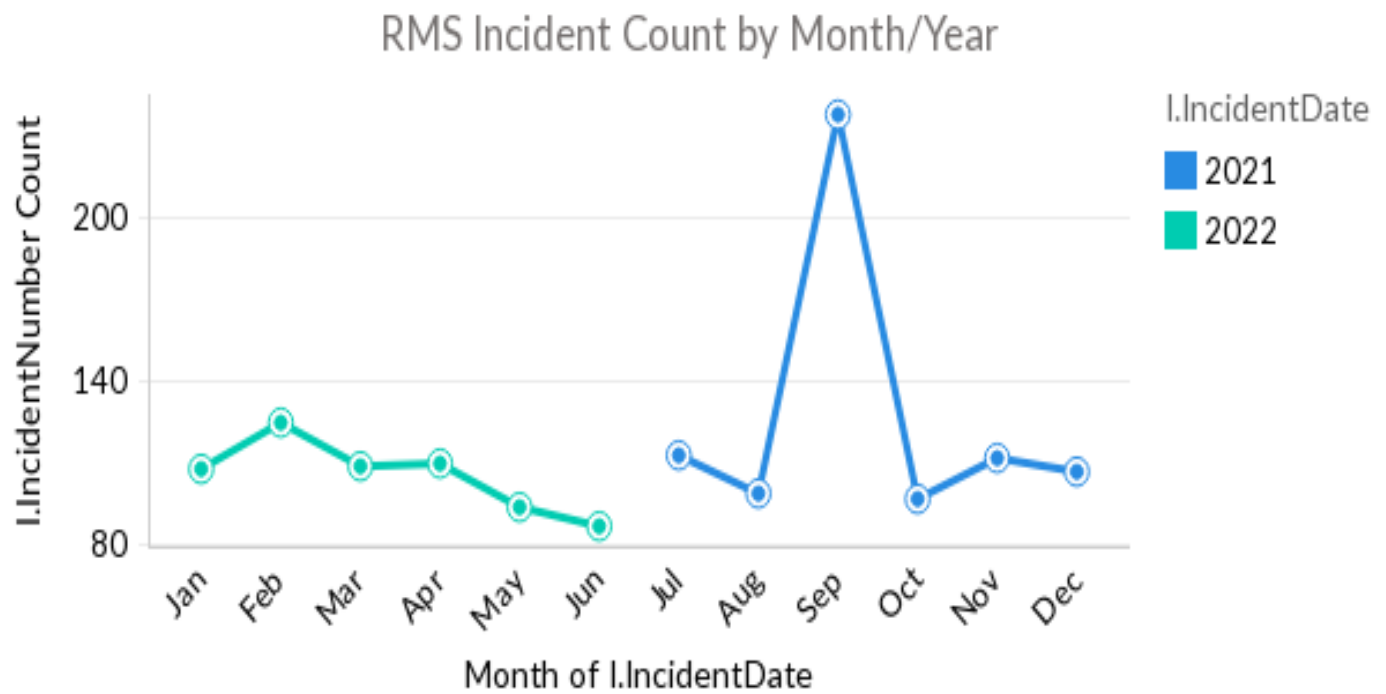


Chart 2



Powered by Zoho Analytics

Chart 3



Powered by Zoho Analytics